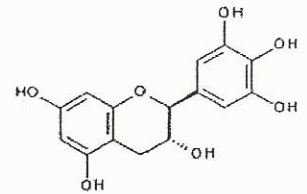




INDOFINE Chemical Company, Inc.

121 Stryker Lane, Building 30
Hillsborough, NJ 08844 USA
Phone: (908) 359-6778; Fax: (908) 359-1179



HPLC ANALYSIS

020973S (-)-GALLOCATECHIN Lot No.: 16091901

IDENTIFICATION

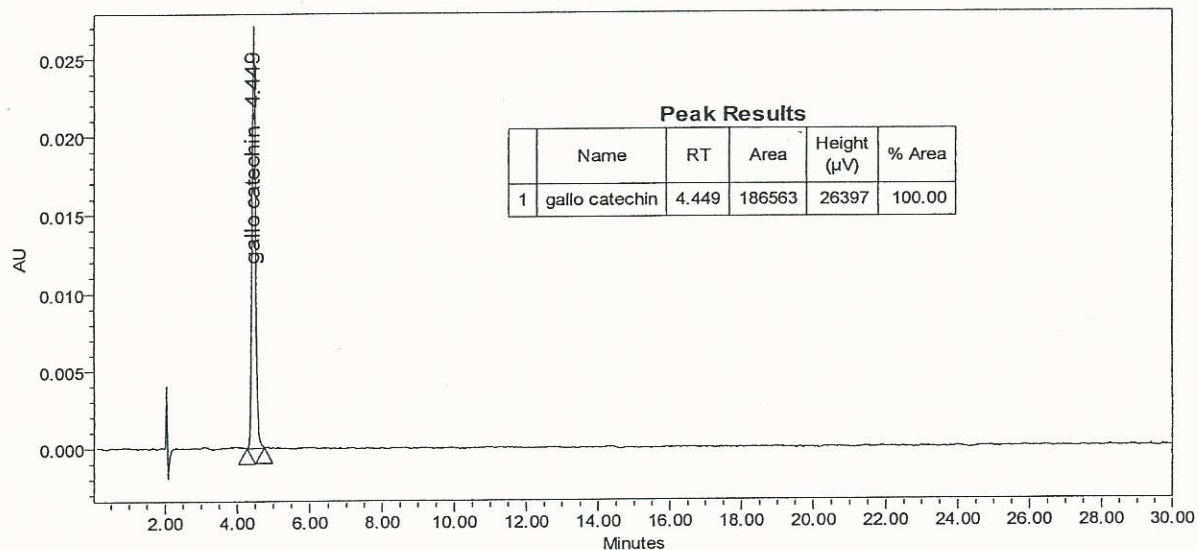
CAS number [3371-27-5]
Chemical family Catechins, Tanins
Molecular formula $C_{15}H_{14}O_7$
Molecular weight 306.27

CERTIFICATE OF ANALYSIS

Appearance White powder
Moisture 6.4 %
Residual solvents 1.1%
Absorption maxima 271, 280sh nm in ethanol
[α]_D -9.3° c=1 in acetone/water (50/50, V/V)
Thin layer chromatography support Silicagel
solvent Ethylacetate/methylene chloride/formic acid (7/2/1, V/V/V)
detection p-Anisaldehyde/acetic acid/sulfuric acid (1/40/1, V/V/V) 10mn at 110°C
Storage Store at +2/8°C in a dry and dark place. Place in a desiccator under vacuum before use.

HIGH PERFORMANCE LIQUID CHROMATOGRAPHY

Column Symmetry Shield RP18® (4.6 x 150 mm), particle size 3.5 μ m
Solvent Water/acetonitrile (88/12, V/V/V)
Flow rate 1 ml/mn
Detector UV visible 280 nm
Sample solvent Mobile phase



Assay by an HPLC method

The values given on the 'Certificate of Analysis' are the results determined at the time of analysis.